

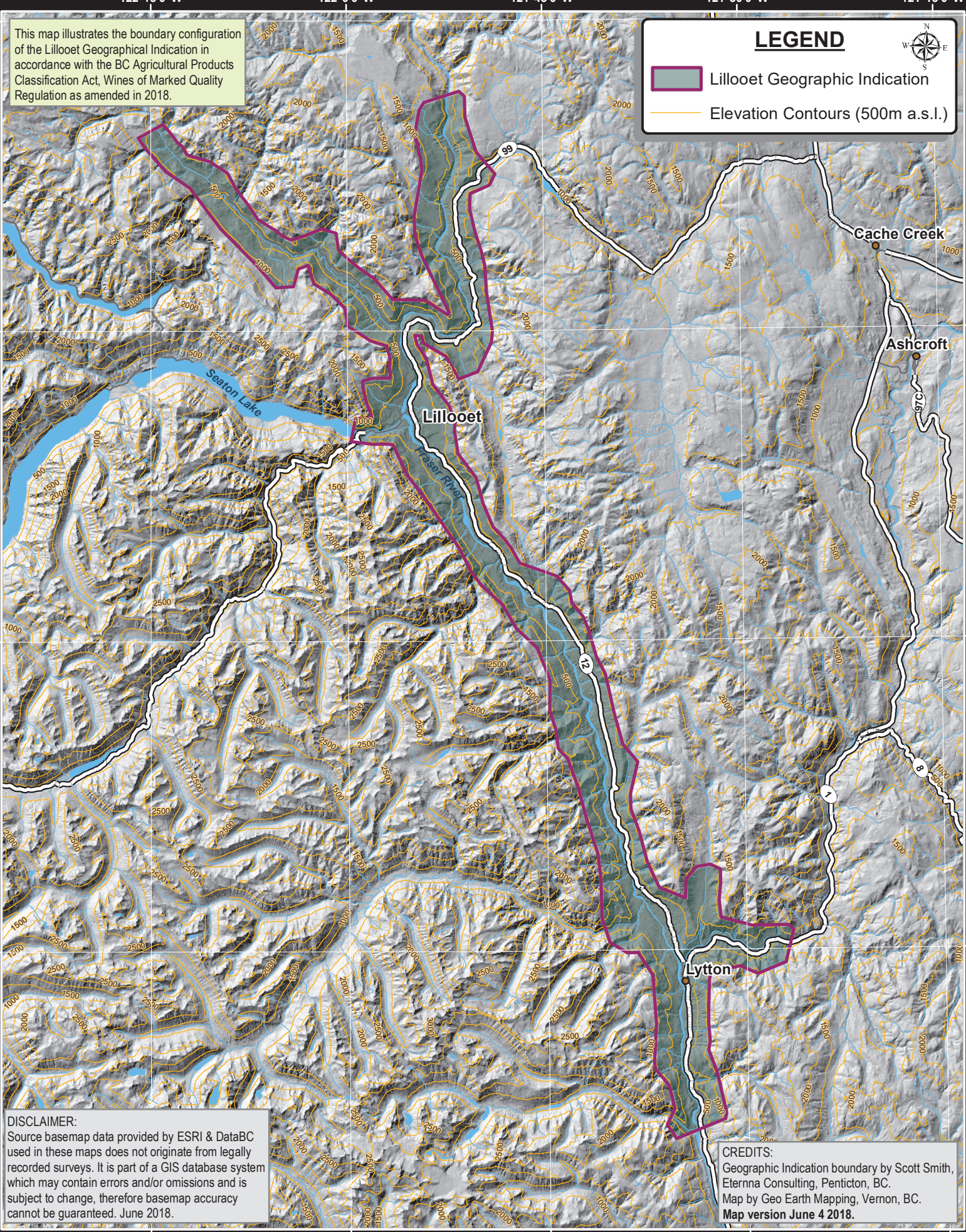



This map illustrates the boundary configuration of the Lillooet Geographical Indication in accordance with the BC Agricultural Products Classification Act, Wines of Marked Quality Regulation as amended in 2018.

LEGEND

-  Lillooet Geographic Indication
-  Elevation Contours (500m a.s.l.)



DISCLAIMER:
Source basemap data provided by ESRI & DataBC used in these maps does not originate from legally recorded surveys. It is part of a GIS database system which may contain errors and/or omissions and is subject to change, therefore basemap accuracy cannot be guaranteed. June 2018.

CREDITS:
Geographic Indication boundary by Scott Smith, Eterna Consulting, Penticton, BC.
Map by Geo Earth Mapping, Vernon, BC.
Map version June 4 2018.

Lillooet Geographical Indication

