


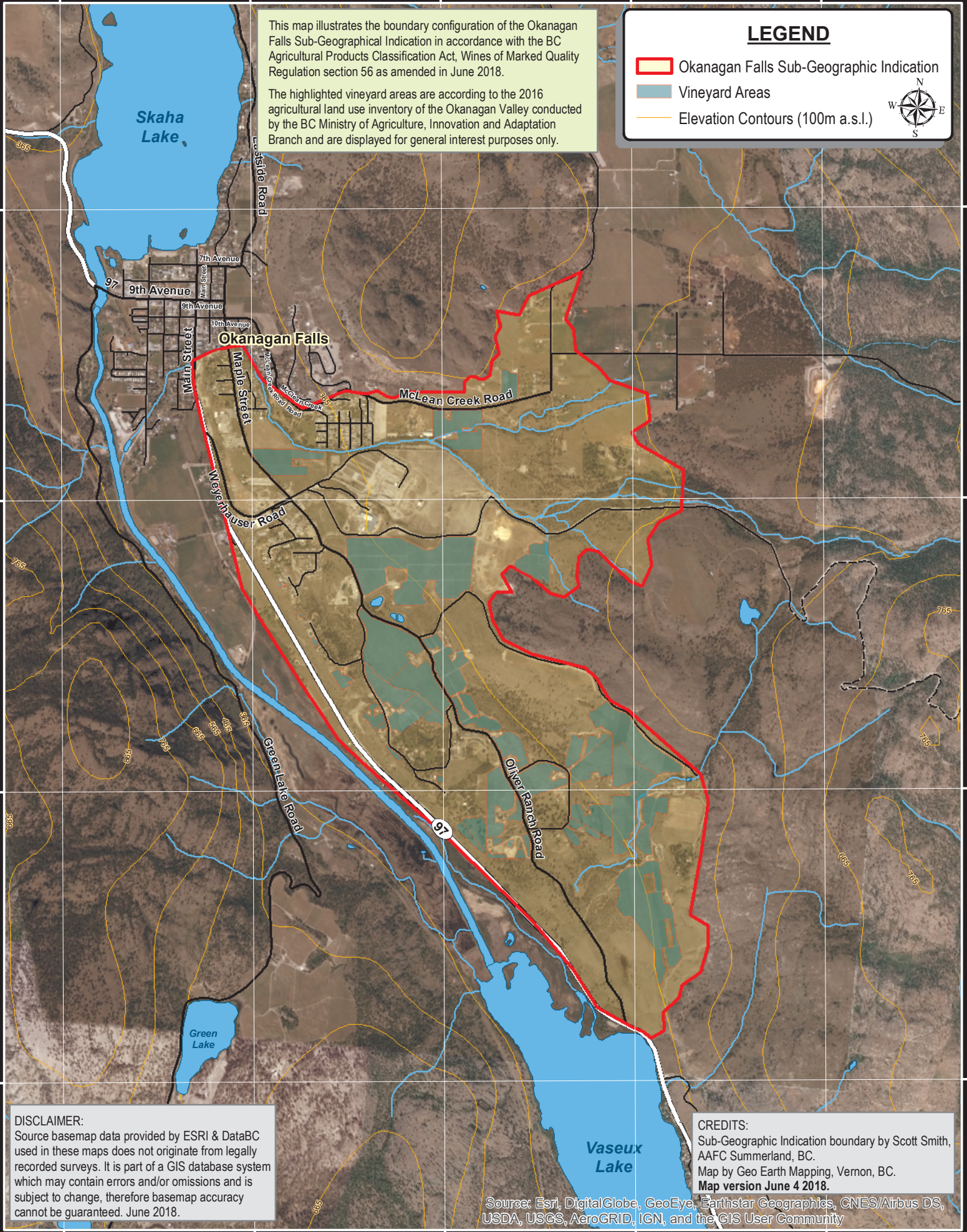


This map illustrates the boundary configuration of the Okanagan Falls Sub-Geographical Indication in accordance with the BC Agricultural Products Classification Act, Wines of Marked Quality Regulation section 56 as amended in June 2018.

The highlighted vineyard areas are according to the 2016 agricultural land use inventory of the Okanagan Valley conducted by the BC Ministry of Agriculture, Innovation and Adaptation Branch and are displayed for general interest purposes only.

LEGEND

-  Okanagan Falls Sub-Geographic Indication
-  Vineyard Areas
-  Elevation Contours (100m a.s.l.)



DISCLAIMER:
Source basemap data provided by ESRI & DataBC used in these maps does not originate from legally recorded surveys. It is part of a GIS database system which may contain errors and/or omissions and is subject to change, therefore basemap accuracy cannot be guaranteed. June 2018.

CREDITS:
Sub-Geographic Indication boundary by Scott Smith, AAFC Summerland, BC.
Map by Geo Earth Mapping, Vernon, BC.
Map version June 4 2018.

Source: Esri, DigitalGlobe, GeoEye, Earthstar Geographics, CNES/Airbus DS, USDA, USGS, AeroGRID, IGN, and the GIS User Community

Okanagan Falls Sub Geographical Indication

